

---

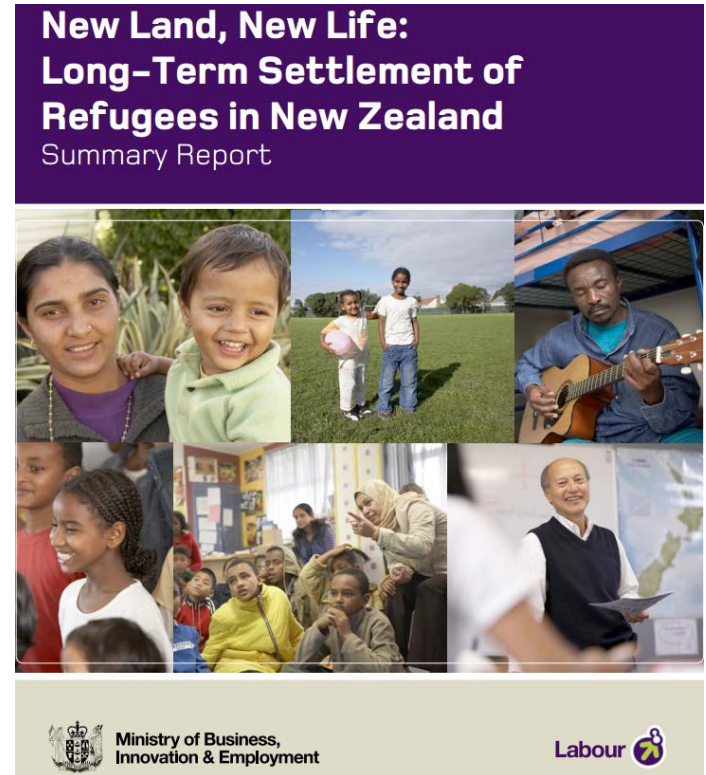
# The New Zealand Refugee Resettlement Strategy: The role of research in guiding future direction

Refugee Research Symposium

3 December 2015  
Andrew Lockhart

# Quota Refugees Ten Years On: *Perspectives of Integration, Community and Identity*

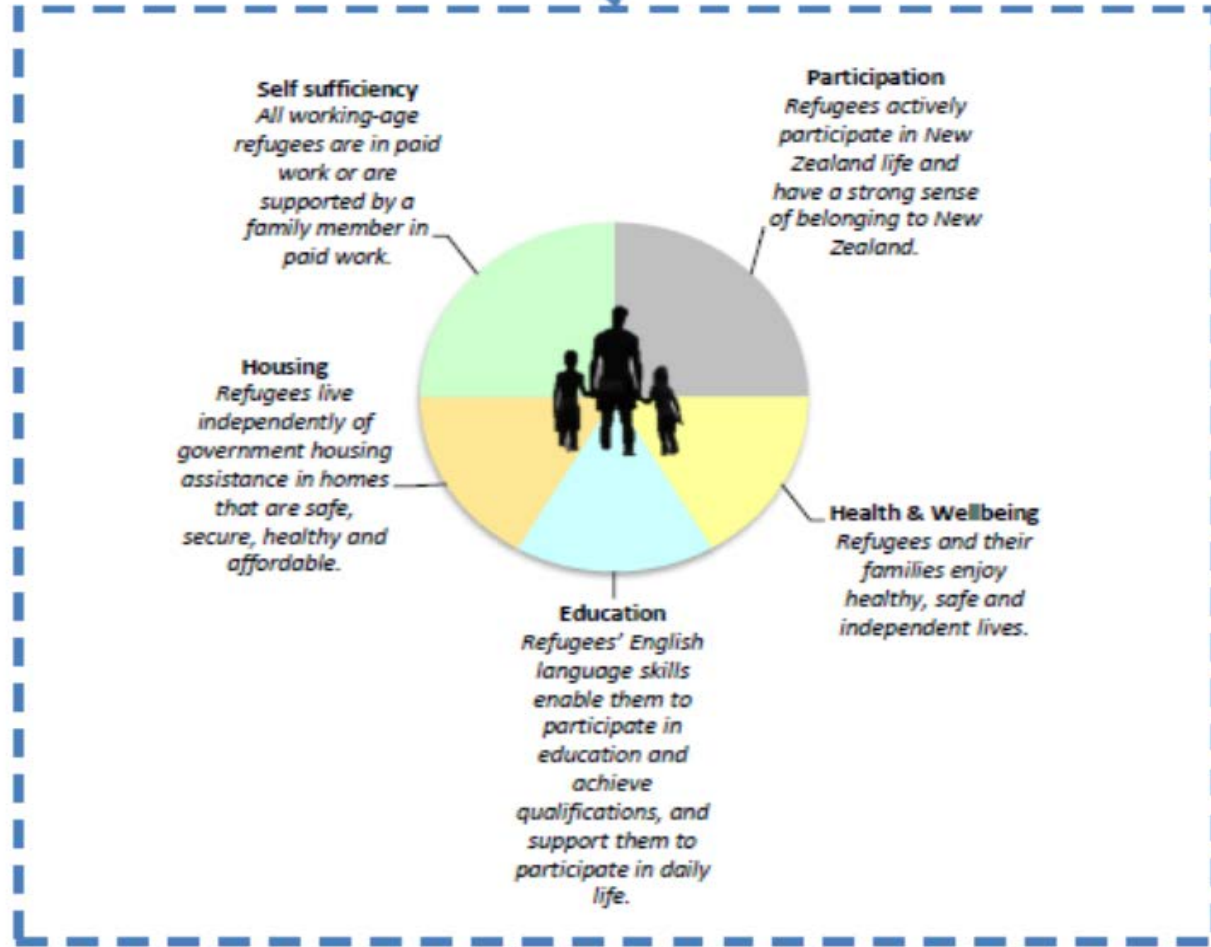
- **Lower Employment Rates**
  - In lower skilled employment
  - Lower earnings
- **English Language:** continued reliance on interpreters
- **Education:** Lower levels of qualifications
- **Health:** Feelings of isolation
- **Social Bonds:** Close connections including outside own community and involved with organisations



<http://www.dol.govt.nz/research/migration/pdfs/new-land-new-life-longterm-settlement-refugees-summary-report.pdf>



# Integration





# Resettlement Strategy Implementation

- Phase One (2013/14): Service mix
- Phase Two (2014/15):
  - mapping English language needs and service provision
  - Employment DVD for reception programme
  - Driver training programme
  - Audit and Evaluation – reception programme and initial settlement
- Phase Three (2015/16): Language barriers to accessing mainstream services – interpreters



# Core Research Elements

- Evidence based research that is focused on outcomes
- Research questions that will lead to action and that will have a measurable impact
- Robust research in the refugee setting:
  - Refugee participation and voice of refugees
  - Getting the sample right (size and composition)
  - Good analysis that leads to findings we can rely on



# Challenges for Research in the Refugee Setting

- Refugee participation
  - Encouraging refugees to participate
  - Trust and understanding of the context
  - Cultural considerations
- Ethics
  - Informed consent
  - Protection of information and ensuring confidentiality
  - Understanding the vulnerability and impact on individuals
  - Taking a community-focused approach to sharing what is learnt
  - Impact of levels of public interest, media representation



# Areas for Future Research in Refugee Resettlement

- **Employment:** Barriers and Pathways
- **Education:** 16 to 18 year olds
- **Health:** Mental health considerations in resettlement
- **Participation:** 'Sense of Belonging' – particularly for youth



Labour & Immigration  
Research Centre

*Te Pokapū a Mahi me Te Manene Rangahau*

QUOTA REFUGEES TEN YEARS ON SERIES

newzealand.govt.nz



SUMMARY REPORT

*Quota Refugees Ten Years On:*  
Findings from the Focus Groups

---

*"We'd like to live the life of New Zealanders  
and fully participate."*

---

INTRODUCTION

Over the last three years, the Department of  
Labour has been leading Quota Refugee Ten Years

who arrived in New Zealand as refugees through  
the Refugee Quota Programme 10–17 years ago. In  
particular, the focus groups sought to give greater

Questions?

*Thank you*